



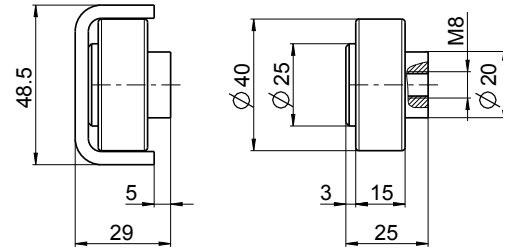
POLYAMID® WINKEL-Rollen | POLYAMID WINKEL Bearings

Typ | Type **PA 4000**

Artikel-Nr. 231.218.003

Article no.

Gewicht | Weight 0,08 kg



Standard A
113.001.000

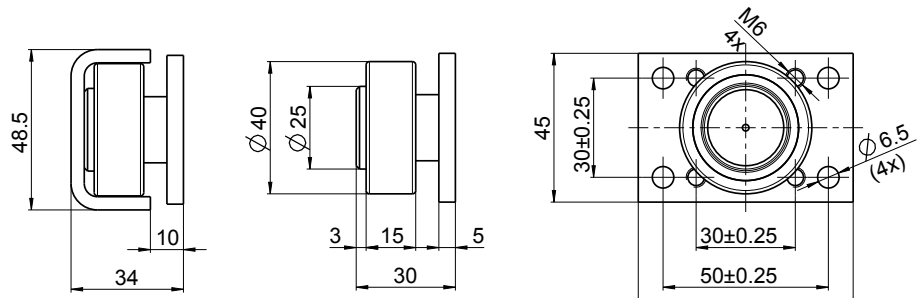
Typ | Type **PA 4000 AP**

Artikel-Nr. 231.218.001

Article no.

inkl. Anschraubplatte | incl. flange plate

Gewicht | Weight 0,18 kg



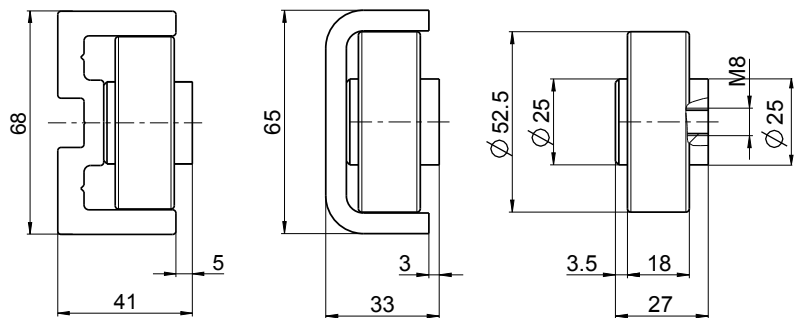
Standard A
113.001.000

Typ | Type **PA 5250**

Artikel-Nr. 231.219.003

Article no.

Gewicht | Weight 0,125 kg



Standard S-ALU
113.002.041

Standard S
113.002.000